

LCD Indication

Charger Mode	LCD Format and definition
Rapid Charging/ Trickle Charging	<p>The LCD display shows a Battery Fuel Gauge with a bar chart and a percentage (82%). A Charging Icon (lightning bolt) is displayed. The Time Left is 01:18. The SoH (State of Health) is Good.</p>
Charging Complete	<p>The LCD display shows a checkmark and the text "Charge Complete". The Battery cycle count is 12.</p>
Temperature fault	<p>The LCD display shows a red X and the text "Over temp.". The Battery Voltage is 7.8V. The Battery temperature is 45°C. The Battery cycle count is 17.</p>
System Fault	<p>The LCD display shows a red X and the text "Charge time out". The Battery Voltage is 7.9V. The Battery temperature is 26°C. The Battery cycle count is 17.</p>
System Fault - Data Error	<p>The LCD display shows a red X and the text "Data error".</p>

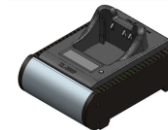
Product Specifications

Specification	HCH-XL1-CHG	HCH-XL2-CHG	HCH-XL6-CHG
Operating Temperature	0°C to +45°C (+32°F to +113°F)	0°C to +45°C (+32°F to +113°F)	0°C to +45°C (+32°F to +113°F)
Storage Temperature	-20°C to +70°C (-4°F to +158°F)	-20°C to +70°C (-4°F to +158°F)	-20°C to +70°C (-4°F to +158°F)
Charge Current	Up to 1.6A	Up to 1.6A	Up to 1.6A
Length	159.7mm	159.7mm	159.7mm
Width	114.6mm	202.3mm	573.1mm
Height	90.2mm	90.2mm	90.2mm
Weight (Power Supply excluded)	800g	1600g	4800g
Power Supply Input	AC 110-240V, 50/60 Hz	AC 110-240V, 50/60 Hz	AC 110-240V, 50/60 Hz
Power Supply Output	DC 13.5V, 3.7A	DC 13.5V, 3.7A	DC 13.5V, 11.2A

User Manual



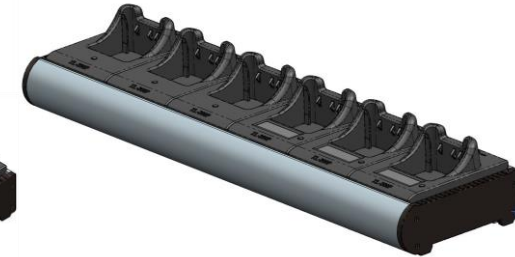
Cradle and Battery Charger For Harris® XL200-P/XL-185P Series Radio Batteries



HCH-XL1-CHG
Single Bay Charger



HCH-XL2-CHG
Two Bay Charger



HCH-XL6-CHG
Six Bay Charger

Equipment Supplied

- One (1) HCH-XL1-CHG (Single Bay Charger) or
One (1) HCH-XL2-CHG (Two Bay Charger) or
One (1) HCH-XL6-CHG (Six Bay Charger)
- One (1) Power Supply with an AC line cord
- One (1) User Manual

Operation

- Plug the power supply into the charger and plug the AC line cord into the power supply and outlet.
- Insert a battery or a radio into any charge bay and use the guide rails to ensure the proper insertion and connection with the charger.
- The unit should start charging automatically.
- See LED and LCD Indication for the charging status in the next section.

LED Indication

INDICATION	DESCRIPTION	LED
LED steady Orange	Rapid Charging	
LED flashing Green	Trickle Charging	
LED steady Green	Charging complete	
LED flashing Red	Temperature fault	
LED steady Red	System Fault	
LED off	No unit in charger	

Safety Guidelines and Warnings

- Before using any model of dock, read all instructions and cautionary warnings
- Do not expose the charger to moisture, temperature extremes, or direct sunlight.
- Place the charger in a well-ventilated area that is free of foreign particles, and do not block the ventilation ports.
- To reduce risk of electric shock, unplug the charger from the power source before cleaning.
- Dispose of used batteries in accordance with state or local hazardous materials laws.
- Do not disassemble, incinerate, modify, or short-circuit the dock, battery, or related components.
- Do not attempt to replace the power supply unit with any other power supply, even if it is similar.
- If there is a need for cleaning, use cotton swab and alcohol.

Troubleshooting

If the dock does not work after following the operating instructions, troubleshoot as follows:

- Check the system power at the DC outlet
- Check for loose cable connections

Warranty & Support

Global Technology Systems, Inc. products are designed to be compliant with the rules and regulations in the localities in which the products are sold and will be labeled as required. The limits are designed to provide reasonable protection against harmful interference when electronic devices are operated in a commercial environment.

This charger is guaranteed to be free from defects in materials and workmanship for 12 months from date of shipment under normal use.

For detailed warranty and service information, please call us at 1-800-267-2711 or visit:

<http://www.gtspower.com/about-us/resources/warranty>

For additional information or replacement parts, please contact:

Global Technology Systems, Inc.

550 Cochituate Road Framingham, MA 01701 USA

1-800-267-2711

www.GTSpower.com